



FORMISSION COLLEGE

MA MISSIONAL LEADERSHIP AND
JUSTICE 2023-24



POSTGRADUATE PROGRAMMES



INTRODUCTION

ForMission College is offering six postgraduate programmes in 2023-24:



- MA Missional Leadership



- MA Missional Leadership and European Studies



- MA Missional Leadership and Spirituality



- MA Missional Leadership and Social Entrepreneurship



- MA Missional Leadership and Justice



- MA Missional Leadership, Discipleship and Movements

All programmes are validated by Newman University and delivered by ForMission College, online and in Birmingham, UK (all programmes except European Studies), and online and in Amsterdam, the Netherlands (European Studies programme only).

Students with student loan funding will study in mixed mode (not fully online). Self-funded students may opt to study in mixed mode or fully online.

** All pathways are delivered subject to sufficient student numbers.*



**Newman
University**
BIRMINGHAM



PROGRAMME AIMS

Our postgraduate programmes aim to equip Christian leaders for missional leadership and practice in postmodern contexts

WHO ARE THE PROGRAMMES AIMED AT?

The programmes are aimed at a wide range of students who are in some form of Christian leadership within churches, charities, mission agencies or community organisations/projects.

STUDY OPTIONS

Our MA programmes are studied part-time and either fully online, or mainly online with some face-to-face classes. Entry points are September, January and May each year.

PROGRAMME STRUCTURE

Each of the MA programmes is completed in three years. The first two years comprise six taught modules. The dissertation module is completed in the third year, on a subject of the student's own choice related to the specialist area they have chosen.

PGCert and PGDip programmes are also available. The PGCert programme consists of three taught modules and is usually completed in one year. The PGDip programme builds on the PGCert and consists of a further three modules and is usually completed in two years. Student loan funding is only available for the full MA programme and not the PGCert and PGDip programmes.

LOCATIONS

The Programmes are offered mostly online and also at our campuses in Birmingham, UK (*all programmes except European Studies*) or Amsterdam (*European Studies only*), subject to minimum cohort sizes.

HOW THE PROGRAMMES WORK

We aim to advance students' knowledge and critical understanding of contemporary issues in mission, drawing on the interdisciplinary fields of missiology, sociology, psychology, leadership studies, theology and biblical studies.

The taught module assessments and the dissertation module offer students opportunities to pursue their particular interests in these fields, and to develop and master the skills of independent study and research.

WHAT DOES A TYPICAL YEAR LOOK LIKE?


Modules are facilitated mostly as online stand-alone study sessions or as face-to-face intensives of one, two or three full study days, which may include overnight stays.

In the case of the European Studies Programme there is normally at least one three-day residential school in each of the first two years of the programme.

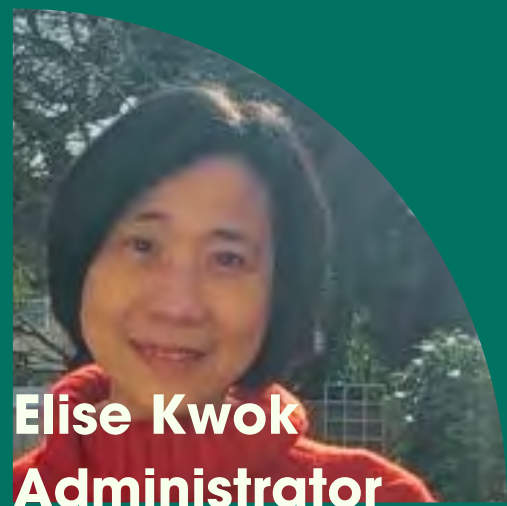
The optional Missional Leadership in European History module is usually delivered through a physical tour of key historical locations around continental Europe and/or the British Isles, with the possibility of a virtual format as an alternative.

Optional modules are delivered either fully, or mostly, online.

Any meals and/or accommodation costs for any required residential stays on the Programme are included in the tuition fees, unless stated otherwise. If you wish to attend any alternative residential modules that may be available, you will need to pay an additional fee of £100 (per module) to cover food and accommodation. All travel costs are your responsibility.



THE MA TEAM



Elise Kwok
Administrator



Andy Kingston-Smith
Postgraduate Director

Our Team of Facilitators





Andy Kingston-Smith **Postgraduate Programme Director**

Andy grew up in Chile and started working life as a solicitor. He then spent three years as a missionary in Bolivia with his family until they returned to the UK where he embarked on a master's degree in Global Issues in Contemporary Mission. In 2008, Andy joined the faculty of Redcliffe College lecturing and co-ordinating the programme on justice issues in contemporary mission. In 2015, he joined the staff of ForMission as Postgraduate Programme Director. Andy contributed to and co-edited the book *Carnival kingdom: biblical justice for global communities*, has co-written a newly-published training programme on biblical justice with International Justice Mission, and contributed to the *Justice Bible*, which was published in 2016. He is co-founder, with wife Carol (also a facilitator for ForMission), of the jusTice initiative and they both write a blog viewable at [Justice, Advocacy and Mission](#).

Elise Kwok **Programme Administrator**

Elise is from Hong Kong and is now in Birmingham. She received her BA (Hons) Degree in Accountancy and MS Degree in Finance from the City University of Hong Kong, an MA Degree in Family Counseling and Family Education from the Chinese University of Hong Kong, and an MSocSc Degree in Counseling from the University of Hong Kong. She is a fellow member of ACCA, a CPA of HKICPA, and an associate fellow of the Hong Kong Professional Counselling Association.

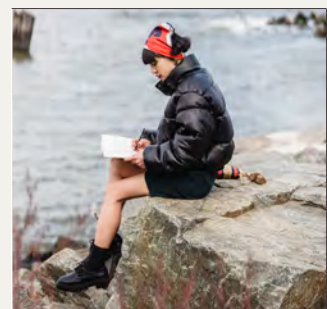
Our Facilitators (teaching staff) come from many different specialist areas. A detailed biography on each is available on our website.



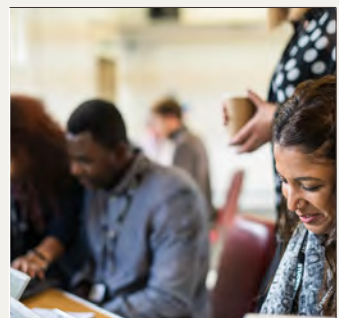


LIFE

AT



FOR MISSION
COLLEGE





Missional Leadership and Justice

Year One

Postgraduate Certificate (PG Cert)

AUTUMN SCHOOL 2023

Specialist Module

MISSIONAL JUSTICE AND BIBLICAL SHALOM (734)

Engaging with the biblical concept of shalom and other biblical and theological justice-focused frameworks to critically inform ethical and justice-based leadership principles and values.

SPRING SCHOOL 2024

Optional Module

One optional module is chosen from the optional module page - subject to availability.

SUMMER SCHOOL 2024

Core Module

MISSIONAL LEADERSHIP AND CONTEMPORARY MISSION (721)

Examining cultural theory, trends and the Church's mission in a postmodern, secular context through missional perspectives and practices.

Or 722 - see opposite

Year Two

Postgraduate Diploma (PG Dip)

AUTUMN SCHOOL 2024

Specialist Module

JUSTICE ISSUES IN CONTEMPORARY CONTEXTS (735)

Examining and reflecting on key justice issues in contemporary local and global contexts, such as climate change/justice, racial divisions and intergenerational conflicts to help form sustainable and ethical practices.

SPRING SCHOOL 2025

Optional Module

One optional module is chosen from the optional module page - subject to availability.

SUMMER SCHOOL 2025

Core Module

RESEARCH METHODOLOGIES AND CONTEXTUAL THEOLOGY (722)

Quantitative and qualitative methods in both local and global contexts, contextual theology, theology of place and social justice in wider society.

Or 721 - see opposite

Year Three

Masters Degree

Students will complete a 15,000-word research-based project on a topic of their choice, subject to approval of the initial proposal by the Programme Director and in line with the overall programme aims and learning outcomes. Students will be assigned a personal supervisor to guide them through the dissertation process.





Optional Modules

Students will choose two options from the list of six below: one in Year 1 and one in Year 2 (note the order is different for the *Discipleship and Movements pathway*)

FORMING AND LEADING MISSIONAL COMMUNITIES (725)

Exploring community practice, mentoring and managing conflict as part of forming and leading healthy missional communities.

SPIRITUAL DIRECTION AND MISSIONAL LISTENING (730)

Examining historical and contemporary expressions of spiritual direction and missional listening, with reflection and exploration of contemporary spiritual beliefs and practices especially amongst unchurched individuals/communities.

MISSIONAL LEADERSHIP IN EUROPEAN HISTORY (733)

Engaging in a European studies tour, with readings, presentations and seminars on the Christian heritage of Europe and key missional leaders and movements in the European/British context (*with possible virtual tour option*).

CREATION CARE, SUSTAINABILITY AND MISSIONAL PRACTICE (736)

Engaging with the theology and practice of creation care, environmental stewardship and sustainability, with particular reference to education for sustainable development.

GLOBALISATION, MIGRATION AND MULTI-DIRECTIONAL MISSION (739)

Evaluating neo-colonialism, globalisation, multi-directional migration, contemporary cultural shifts and global and local trends in cross-cultural mission and expressions of 'new Christianities'.

INDEPENDENT STUDY MODULE (740)

Identifying a topic, issue, or ministerial area relevant to an aspect of missional leadership and developing an independent learning project.



PROGRAMME RESOURCES

Student resources include College-produced material, with access to a wide-ranging online journal database, electronic resources and the College's online virtual learning provision. The programmes include personal development through guided personal reflection, ensuring students' studies and practical ministry continually inform each other.

TEACHING STAFF

Our academic staff are also involved in leadership roles outside of the college which give each of the programmes a clear practical focus and place a high value on research and reflective practice.

CONTACT

Please feel free to contact the Postgraduate Programme Director, Andy Kingston-Smith (email address below), for more information on our programmes. He would be happy to discuss any queries you may have including the possibility of sampling an online class session.

andykingston-smith@formission.org.uk

'In partnership with ForMission, we are delighted to be delivering a new pathway engaging with key issues of justice. In a world of climate injustice, racial division, and social and economic inequality, there has never been a more urgent time to help equip leaders who model just and sustainable forms of missional leadership, together with communities and organisations that can meaningfully influence their worlds through ethically informed theological and biblical practice.'



**Andy & Carol
Kingston-Smith,
Founders, the
justTice initiative**

APPLYING FOR OUR MA PROGRAMME

TUITION FEES

Our aim is to make tuition as affordable as possible to equip more people to serve in a wide range of church and mission situations.

MA Full Degree - £9,600

Years 1 & 2 (per year) - £3,600

Years 1 & 2 (per module) - £1,200

Year 3 (dissertation) - £2,400

Fees above are inclusive of meals and accommodation costs for any required residential stays, unless stated otherwise. If you wish to attend any alternative residential modules that may be available, you will need to pay an additional fee of £100 (per module) to cover food and accommodation. All travel costs are your responsibility.

Student Loan Funding is available on our full MA programmes and eligible students will be registered with Newman University under a franchise agreement between ForMission and Newman University. Student loan funding is not available for the PGCert and the PGDip programmes.

If you undertake the part-time programme and exit after successfully completing one year you will be awarded a PG Cert.

If you leave after successfully completing two years you will be awarded a PG Dip subject to completing requisite modules to fulfil the specific requirements of these awards.

Postgraduate programmes offered in any given year are subject to minimum cohort sizes, both by programme and teaching location.

ADMISSIONS CRITERIA

- A good first degree (first, upper second or strong lower second) or Graduate Diploma in theology or related subject.
- Previous awards do not need to be in theology and a degree in a related subject is usually sufficient evidence of an ability to engage with the programme.
- Students without a degree but who can demonstrate significant ministry experience will also be considered, subject to appropriate assessment.

HOW TO APPLY

Go to www.formission.org.uk and click on the 'apply now' section of the MA programme. The online application form will guide you through the process.

You will need to have documentary evidence (proof of identity, e.g. passport and copies of educational certificates).

Our admissions team will then contact you to arrange an interview via Zoom, or at one of our campus locations.

Successful applicants who wish to apply for student finance will need to complete an admissions process with Newman University after their acceptance with ForMission.



*“I love the fact that the
facilitators are practitioners
and are passionate about
engaging our world with the
Gospel”*

MARCUS MOSEY, MA GRADUATE



FORMISSION COLLEGE

ForMission College
Rowheath Pavilion, Heath Road
Birmingham, B30 1HH
+44 (0) 121 458 5240

*If you would like more information,
or to discuss study possibilities and
options, please contact the
Postgraduate Programme Director,
Andy Kingston-Smith at:*

andykingston-smith@formission.org.uk

*Please be aware that details in this brochure
are subject to change. For the most up-to-date
information, see www.formission.org.uk*

